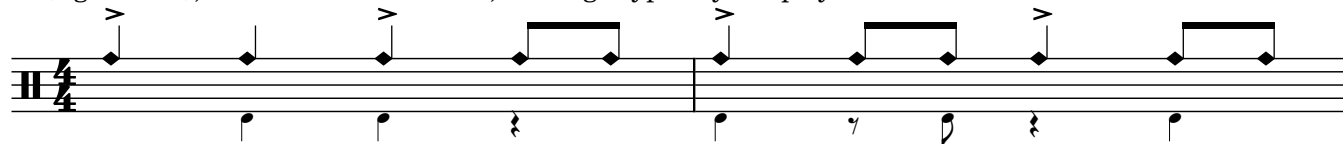


Campana and Contra-campana

Tom Yanez

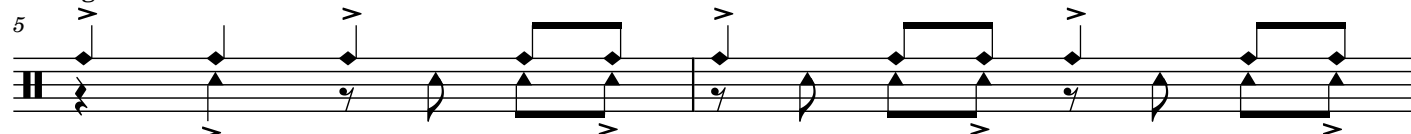
Campana (right hand), matches with the clave, although typically not played at the same time. Think "clave = internal metronome"



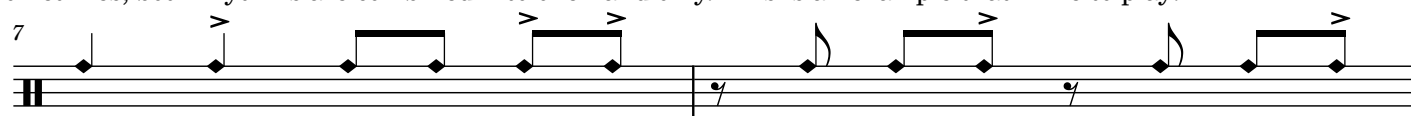
Contra-campana (left hand), played together with the campana during the highest energy sections



Both together:



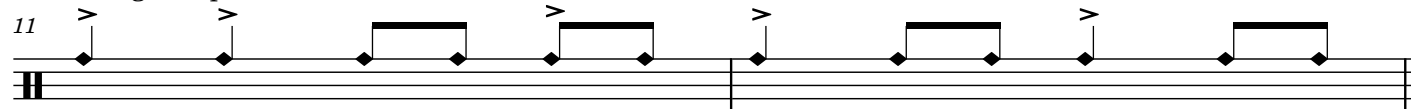
Sometimes, both rhythms are combined into one hand only. This is an example that I like to play:



This is an example from Daniel Ponce



From CongaChops



Curated playlist with campana timestamps:

La Jama - Compota De Manana (0:50)

Duplicandote La Dosis - Timbalive (0:12)

El Gran Varon - Willie Colon (2:03 --> contra-campana variations, 2:43 --> contra + campana)

Idilio - Willie Colon (2:35 --> contra-campana variations, 2:45 --> contra + campana)

El Cantante - Hector Lavoe (2:55)